



SAVE OUR OCEAN

STOP PLASTIC POLLUTION



AGENDA

- Statistics
- Stop for a minute and think
- How does plastic affect Animals
- How the ocean is getting 'bullied' by plastic
- Effect of polystyrene
- What can we do....?

Global Plastic Waste

Recent statistics indicate that plastic waste is approximately **30% of all waste produced worldwide.**

The world generated **242 million tonnes of plastic waste**, 12% of all municipal solid waste.

The majority of this waste came from three regions:



An estimated **81% of global ocean plastic waste** was emitted from Asia in 2019

Countries with a **smaller geographical area**, longer **coastlines**, high **rainfall**, and **poor waste management systems** are more likely to wash plastics into the sea.

Of the global plastic waste, estimated



GREENMATCH

THE TRUTH ABOUT PLASTIC WASTE

IT WOULD TAKE **67 SHIPS A YEAR** TO CLEAN UP **LESS THAN 1%** OF THE GREAT PACIFIC GARBAGE PATCH

EACH YEAR, MORE THAN **100,000** MARINE ANIMALS ARE KILLED BY OCEAN PLASTIC WASTE

ENTANGLEMENT OR INGESTION

91% OF THE WORLD'S PLASTIC WASTE IS NOT RECYCLED

GLOBAL PLASTIC POLLUTION IS FORECAST TO **DOUBLE BY 2040**

EVERY DAY, THE EQUIVALENT OF OVER **2,000** GARBAGE TRUCKS OF PLASTIC IS DUMPED INTO OUR OCEANS, RIVERS, AND LAKES

PLASTIC PRODUCTION HAS **MORE THAN DOUBLED** IN THE LAST **TWO DECADES**

MORE PLASTIC WASTE IS **MISMANAGED AND LITTERED** THAN IS **COLLECTED FOR RECYCLING**

HALF OF ALL PLASTIC IS USED JUST ONCE

ROUGHLY **85%** OF **SINGLE-USE PLASTIC PACKAGING ENDS UP IN LANDFILLS OR AS UNREGULATED WASTE**

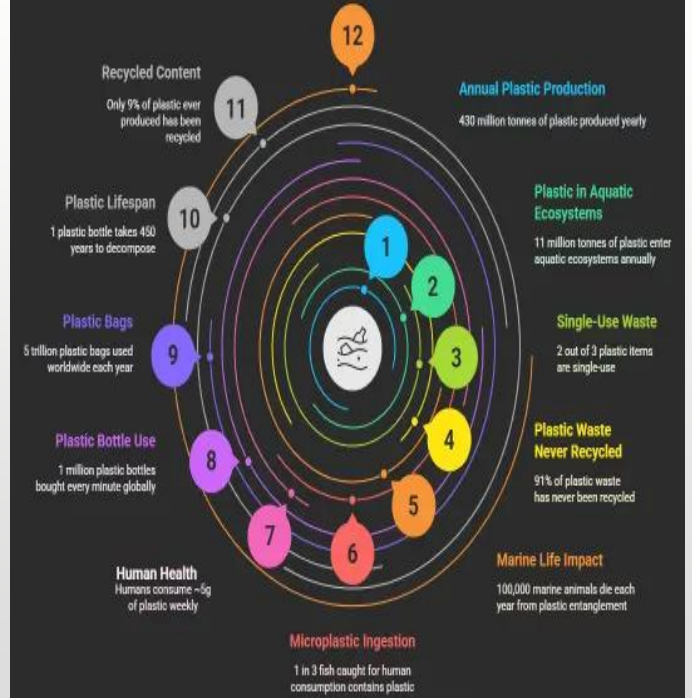
ALMOST **2/3** OF PLASTIC WASTE COMES FROM APPLICATIONS WITH LIFESPANS OF **LESS THAN 5 YEARS:**

PACKAGING 40%
CONSUMER PRODUCTS 12%
TEXTILES 11%

alepa thesustainableagency.com Sources: OECD, Nordic Council of Ministers and Systemiq, Our World in Data, WEF, UN, UNEP, UNESCO, NOAA

The Global Plastic Crisis

Projected Plastic Waste
1.3 billion tonnes of plastic waste could end up in the environment by 2040



World Environment Day 2025-
#BeatPlasticPollution

www.hseuniverse.com info@hseuniverse.com



STOP FOR A MINUTE AND THINK...

Impact on Wildlife

The pollution gets into the water which is an eco system and the animals eat it, and become poorly and under threat, especially the endangered ones.

Environmental Effect

Non biodegradable plastics destroy habitats for animals and that means that animals cannot live in their natural environment.

Benefits of Reducing Plastic

By not using as much plastic, we could save hundreds of animals lives.



HOW DOES PLASTIC AFFECT ANIMALS

When animals eat plastic

Animals sometimes think plastic is food, and when they eat it can cause blockages in their stomach, and they can die.

When animals get tangled

When animals get trapped in plastic waste, it can stop them from moving, cause suffering and can lead to death.

Chemicals from plastics

Animals can get very poorly from chemicals found in plastics which can lead to them suffering.

HOW THE OCEAN IS GETTING 'BULLIED' BY PLASTIC

Humans eating plastic

As we all know we love eating prawns and fish. But would you want to eat a prawn that was full of plastic? Probably not. When plastic is in the sea, animals eat it, then we eat the animals. Not great for us or them is it.

Dangers to sea animals

Large pieces of plastic damages life under the sea, including their homes. This means that it will reduce the number of types of different species as their homes will be destroyed by plastic.



This Photo by Unknown Author is licensed under [CC BY-NC-ND](#)



EFFECT OF POLYSTYRENE

Especially Hawaii, Hawaii goes through the most amount of polystyrene and polystyrene containers because they have lots of it and that means they use it for breakfast, dinner and tea and they throw it away after every meal so that means that Hawaii throw away 50,000 lbs every single day and it goes into the sea and fish eat it thinking it is there food and then we eat the fish which means we could get incredibly ill.





WHAT CAN WE DO....?

- The solution to dilute the pollution, is to use biodegradable plastics and eco friendly materials.
- Join a local litter pick.
- Recycle plastics.
- Use your own refillable bottles instead of buying plastic bottles/new bottles.



THANK YOU FOR
LISTENING, WE
APPRECIATE IT!

Plastic pollution

- In class 3 we are learning about plastic pollution this term.
- We need to help plastic pollution that is spreading across the world .
- Plastic pollution is harming animals by poisoning, suffocating or even seriously injuring themselves, as a result these effects harm them by blocking their stomachs and therefore they go into starvation and then they sadly die.
- But because it is poisoning them, then when we go fishing, we might catch a poisoned fish and if we eat that fish it could backfire on us .
- So we need to clean out oceans for a better future and better health.





How much plastic is there in the ocean?

There is 75 to 199 MILLION metric tons of plastic waste in the ocean that is harming beautiful sea creatures that are suffering to stay alive .



Plastic is harmful!

1. Plastic is very harmful to humans and animals, but it would be a lot safer if we recycled.
2. So we can help our oceans and sea creatures, by recycling and using reusable water-bottles.
3. Remembering that anything we put down our drains ends up in the ocean !



[This Photo](#) by Unknown Author is licensed under [CC BY](#)

**Its not just about the
sea but our future !**

This could affect our future massively so we should not just be thinking about the ocean and its sea creatures but our future because our future could be ruined if we don't do something about the way we use our plastic. So, we aren't just risking sea creatures lives we are risking the whole world and if you think about it, we are putting everyone in danger, I know if we do our part it doesn't mean everyone else will, but we can eventually succeed if we try.

The end



[This Photo](#) by Unknown Author is licensed under [CC BY-NC-ND](#)

A wide-angle photograph of a massive landfill site. The foreground and middle ground are filled with a dense sea of discarded plastic bottles, bags, and other debris. In the distance, a yellow bulldozer is visible, working on the waste. The sky is filled with hundreds of birds, likely gulls, flying in various directions. The overall scene conveys a sense of environmental impact and waste management.

Human effects and impacts on our natural world

Leo's half term project

Improving Plastic Disposal

- **Increase Recycling Rates**
- **Biodegradable Alternatives**
 - Encouraging the use of biodegradable plastic alternatives minimises long-term waste, supporting a healthier environment with less pollution.
- **Community Waste Education**
 - Educating communities about waste management raises awareness and drives responsible disposal practices, improving local and global ecosystems.
- **Stricter Regulation Enforcement**
 - Implementing and enforcing regulations ensures plastic waste is managed responsibly and discourages harmful disposal habits.



How much plastic are we using?

- **Key Points About Plastic Waste**
- Derbyshire discarded over 98,000 tones of plastic in 2014/15
- Plastic is used for many different purposes
- A significant amount of plastic is thrown away





Plastic Waste Distribution

Plastic in Landfills

Over 40% of plastic waste ends up in landfill, contributing to environmental pollution and resource loss.

Growing Recycling Efforts

Initiatives to recycle and reuse plastics are increasing, helping to reduce landfill waste, but still face many obstacles.

Need for Better Solutions

The gap between plastic production and effective waste management indicates a pressing need for innovative solutions.

TYPE	RECYCLABLE	NON-RECYCLABLE	GOES TO LANDFILL
Food wrappers	Yes (sometimes)	yes	Yes (most of the time)
Plastic sheets	Yes (sometimes)	No	yes
polystyrene	No	yes	yes
PET plastic	Yes	No	No
Cling film	No	Yes	Yes
Shopping bags	No	Yes	Yes

What impact we are making against this man-made disaster



The impact is evidently significant because...



It is estimated that more than 100,000 marine animals and over a million seabirds perish annually due to plastic pollution.



Each day, the equivalent of 2,000 bin trucks filled with plastic waste enters the ocean.



What measures are we implementing to address and rectify our errors?

We are enacting legislation, organising ocean cleanups, and establishing charities focused on combating pollution.

WHAT CAN WE DO TO HELP?

- Minimise plastic consumption by choosing reusable alternatives.

- Advocate for policies and support organisations dedicated to protecting ocean ecosystems.

- Ensure hazardous waste is disposed of correctly to avoid polluting marine environments. (e.g. don't put batteries in your bin at home, take them to the recycling centre or supermarket)

- Raise awareness about the effects of ocean pollution and effective prevention measures.

- Engage in community clean-up initiatives within your village, town, or city. (Derbyshire Dales council have litter picking initiatives, or organise your own)

- Think before you purchase single use plastic like cling film and plastic bags

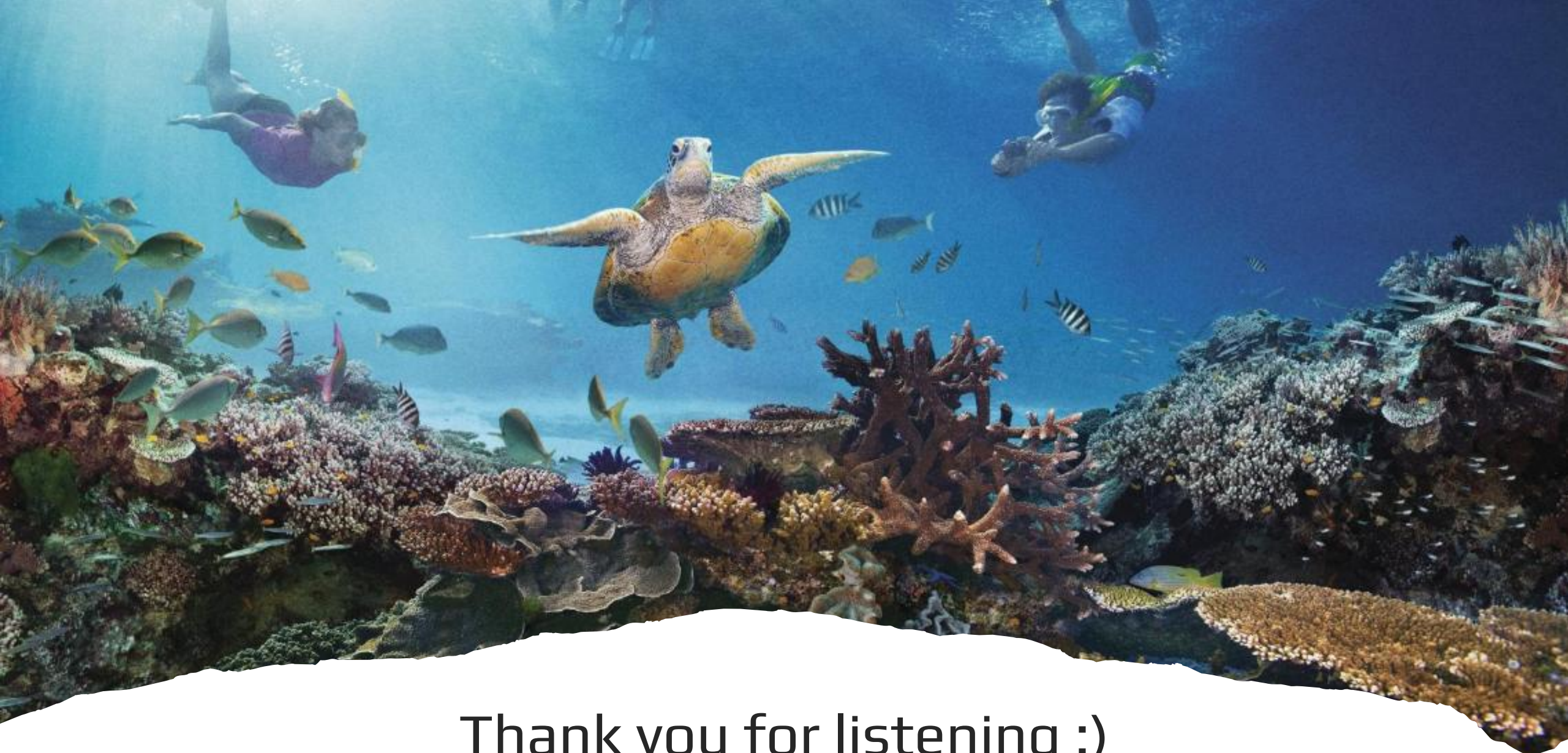
- Avoid plastic tat!





FIND OUT MORE!

- <https://www.bbc.co.uk/bitesize/articles/zh3vsk7#zssjwnb>
- <https://www.youtube.com/watch?v=VDrRhV1Rhsk>
- <https://www.nationalgeographic.com/environment/article/plastic-pollution>



Thank you for listening :)

Earth our home

By Emma and Lara

Soon our oceans will look l



5 facts on how its affecting our wildlife 😞 us

1. Animals get trapped in it
2. Microplastic gets into our food and water.
3. We put plastic into the oceans fish then eat it and die and then we eat the poisoned fish
4. It can't rot so it is not sustainable
5. 5.3 trillion pieces of plastic are afloat in our ocean



What animals are affected by plastic pollution



How to make a happier world



Reduce reuse recycle

Reduce plastic

Reuse plastic

Recycle plastic



Recycle

WE ARE ALL

IN THIS



TOGETHER!

Look at what happens



pick up

YOUR

TRASH

What can you do to help?

1. Litter pick
2. Use reusable bags
3. Use bins
4. Recycle
5. Have reusable water bottles
6. Don't litter



THE END



SAVE WILDLIFE



SAVE EARTH

